

A

B

C

D

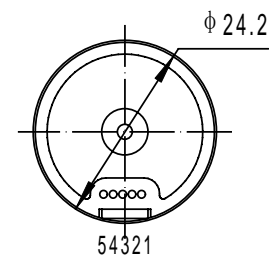
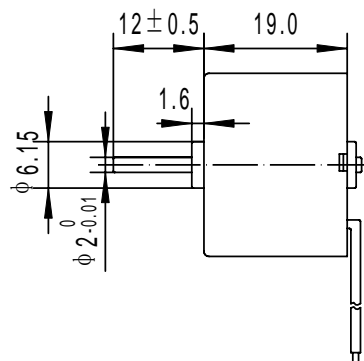
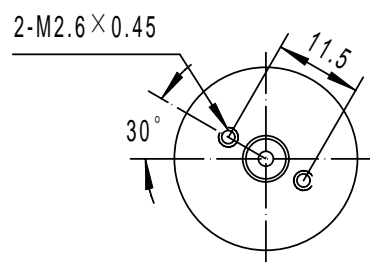
E

F

G

H

TEC2419-001A BRUSHLESS MOTOR



MOTOR Specification(For Reference):

Operating voltage: 24.0VDC (Operating Range :15~26V)

- 1、 No Load Speed: 8700±10%rpm
- 2、 No Load Current:80mA (100mA max)
- 3、 20g.cm Load Current:150mA
- 4、 20g-cm Load Speed:7000rpm
- 5、 Allowable max Current:650mA

TABLE1 CONNECTER INTERFACE

No.	PIN ARRANGEMENT
1	GND(BLACK WIRE)
2	24V (RED WIRE)
3	FG (EMPTY)
4	ST/SP AND PWM (WHITE)
5	CW/CCW(High=CW/Low=CCW)

TITLE: TEC2419-001A	Customer No:	Drafted By: kevin wang	
		Checked By:	
Dwg. NO: 704H050-A11524	Date: 2011.11.29	Approved By:	
		Scale: 1:1	Units: mm
		EDITION No: A	
		Angular: =1°	Decimal: X.XX ±0.05 X.X ±0.2 X ±0.3