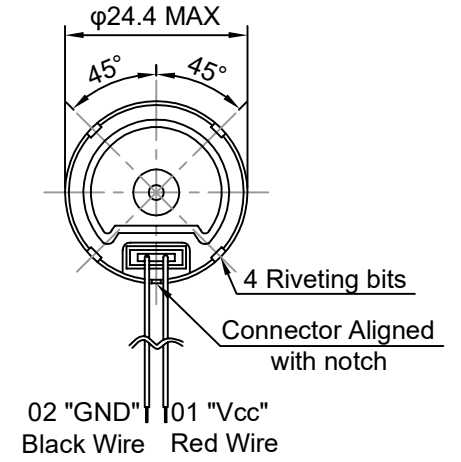
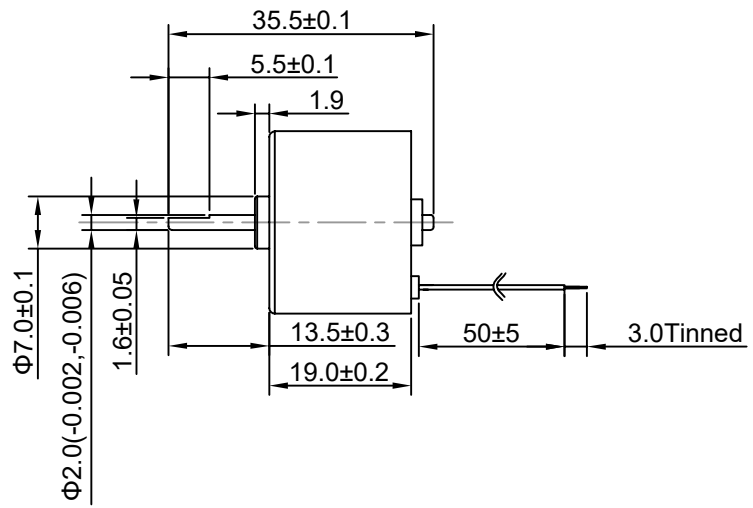
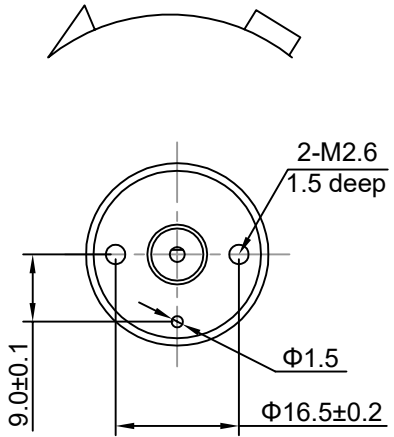


8 7 6 5 4 3 2 1

D

Direction of Rotation



B

A

No.	Item	Specification	No.	Item	Specification
1	Rated Voltage	12V DC	7	Rated Load	20g.cm
2	Voltage Range	8-15.0V DC	8	Shaft end play	0.3mm Max
3	No Load Current	0.07A Max	9	Terminal Resistance	22.2±3.3ohm
4	No Load Speed	4500±10%RPM	10		
5	Rated Load Current	0.13A Max			
6	Rated Load Speed	3800±10%RPM			

Drawn	Tony	09/19/2024	Unit: mm		
Checked	Eva	09/19/2024	Kysan Electronics www.kysanelectronics.com		
Eng Appr.					
Mfg Appr.					
Q.A.					
SKU: 1025125			Siae: A4	Weight(Kg):	
			Scale		

8 7 6 5 4 3 2 1

D

C

B

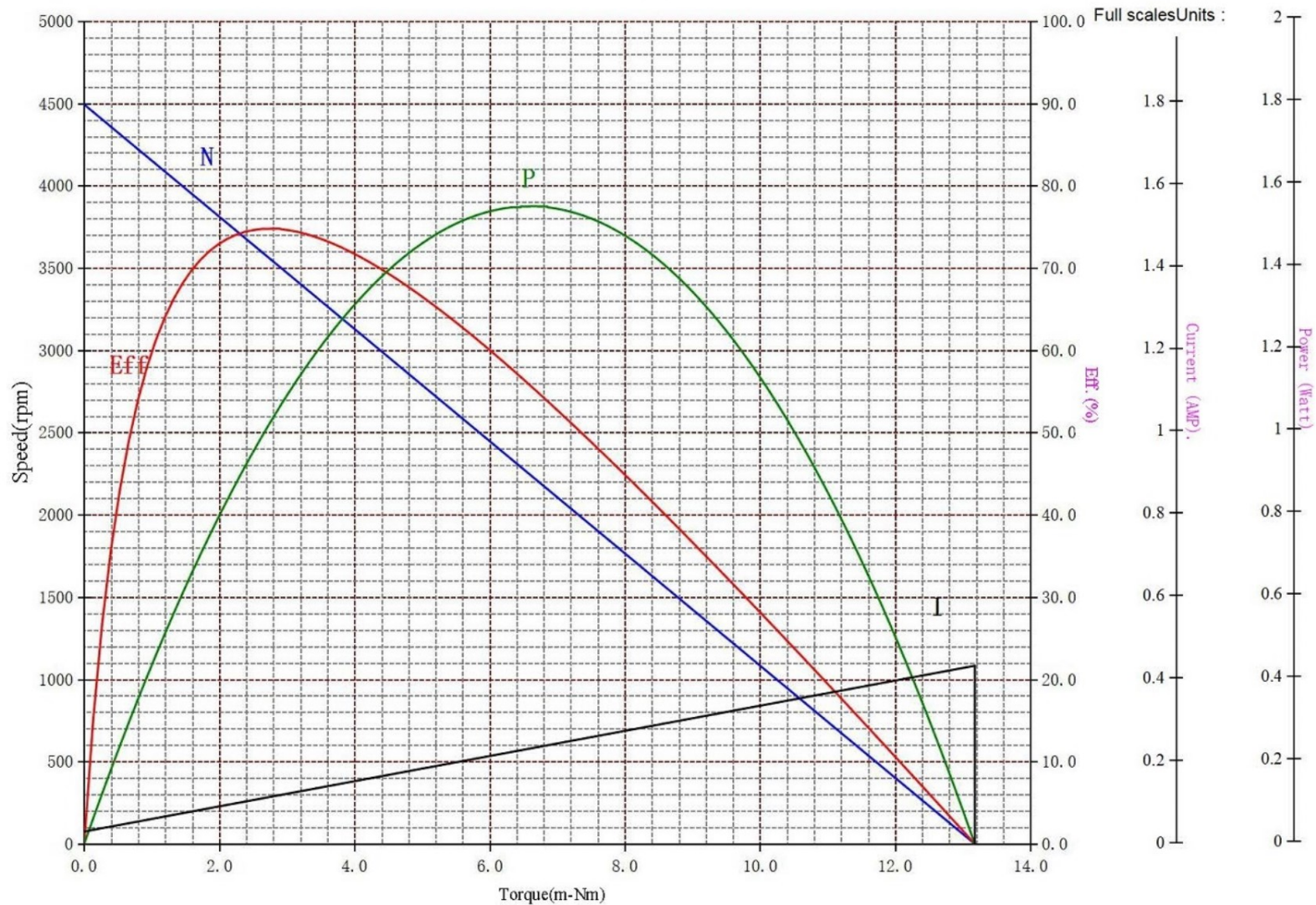
A

SSO#:

Winding :

Sample Lot.:

#REF!



Performance (In an ambient temperature of 25 -30 C)
Motor tested rapidly to prevent significant temperature rise.

At a constant voltage of **12.00** Volts
With a circuit resistance **0.000** Ohms

AT No Load	
Speed :	4493 Rpm
Current:	0.030 Amp
At stall (Extrapolated)	
Torque :	13.177 m-Nm
Current:	0.433 Amp
At maximum efficiency	
Efficiency :	74.78 %
Torque :	2.746 m-Nm
Speed :	3557 Rpm
Current :	0.114 Amp
Output :	1.023 Watts
At maximum power	
Torque :	6.589 m-Nm
Speed :	2247 Rpm
Current :	0.231 Amp
Output :	1.550 Watts

Characteristics	
Torque Constant :	32.700 m-Nm/Amp
E.M.F Constant :	32.700 mV/rad/sec
Dy. Resistance :	27.715 Ohms
Motor Regulation:	340.979 Rpm/m-Nm

Calculation	
At Torque Level:	1.962 m-Nm
Speed :	3824 Rpm
Current :	0.090 Amp
Efficiency :	72.75 %
Output :	0.786 Watts

COMPUTER PRINT-OUT
NOMINAL MOTOR CURVES.
Performance and characteristics are measured based on limited motor samples only.