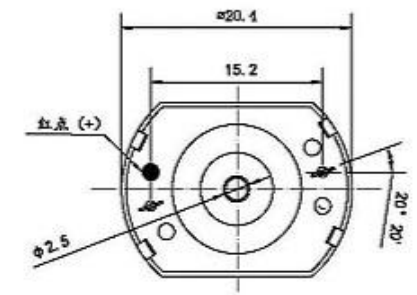
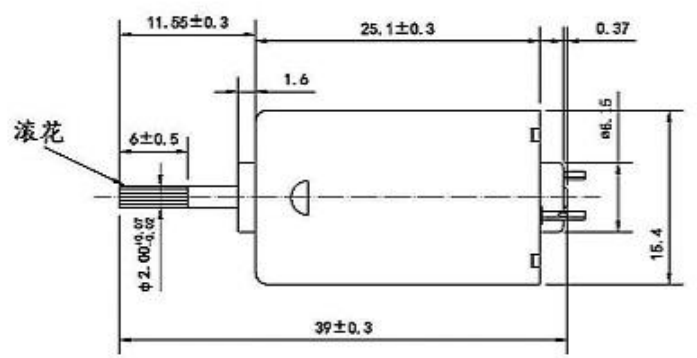
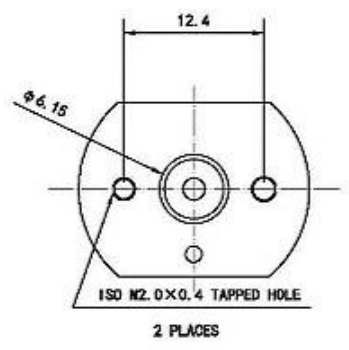
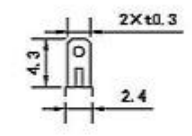


8 7 6 5 4 3 2 1

轴突端视图转向
CCW



滚花

±点 (+)

No.	Item	Specification	No.	Item	Specification	Drawn	Bruce	12/06/2021
1	Rated Voltage	6.0V DC	7	No load current	100mA Max	Checked		
2	Direction of Rotation	CCW	8	No load speed	7400±10% rpm	Eng Appr.		
3	Rated load	12.3g.cm	9	Stall current	1.2A Max	Mfg Appr.		
4	Rated load current	275mA Max				Q.A.		
5	Rated load speed	6000±10% rpm				SKU:		
6	Starting Torque	50g.cm Min				1112185		

Kysan Electronics
www.kysanelectronics.com

Size: A4 Unit: mm
Scale: Sheet: 1 of 1

8 7 6 5 4 3 2 1

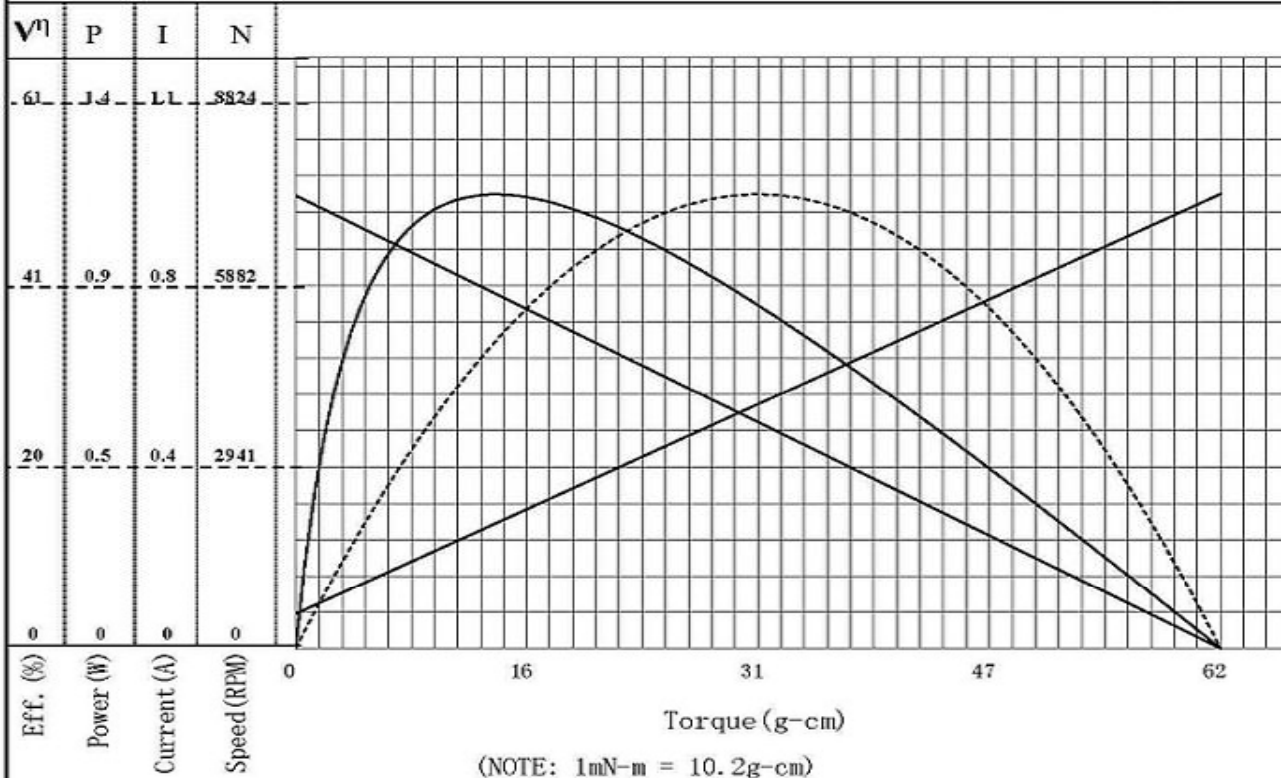
SKU: 1112185
MFG: FF-130SH-14230

Date: 2021.12.06

— Efficiency
- - - - - Power output

NOTE: Performance (in an ambient temperature of 25-30°C)

Motor tested rapidly to prevent significant temperature rise.



Constant voltage :	6.0 V _{DC}
Direction:	CCW
At No Load	
Speed:	7329 rpm
Current:	0.071 A
At stall (Extrapolated)	
Torque:	62.1 g-cm
Current:	0.94 A
At maximum efficiency	
Efficiency:	51.0 %
Torque:	13.7 g-cm
Speed:	5712 rpm
Current:	0.26 A
Output:	0.80 W
At maximum Power output	
Output:	1.17 W
Torque:	31.0 g-cm
Speed:	3665 rpm
Current:	0.50 A

Issued by QA Reliability Testing Center

COMPUTER PRINT-OUT

NOMINAL MOTOR CURVES

Performance and characteristics are measured based on limited motor samples only