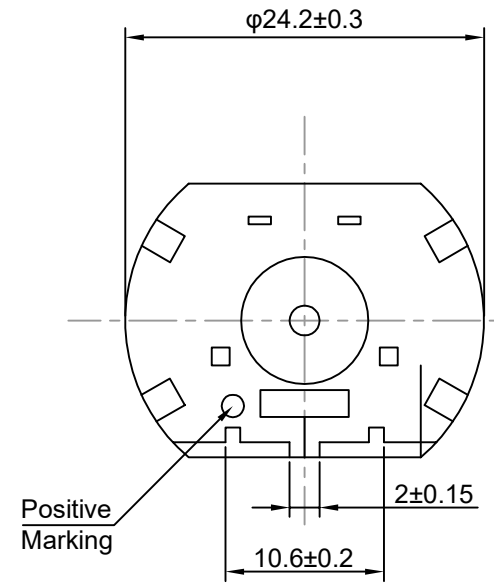
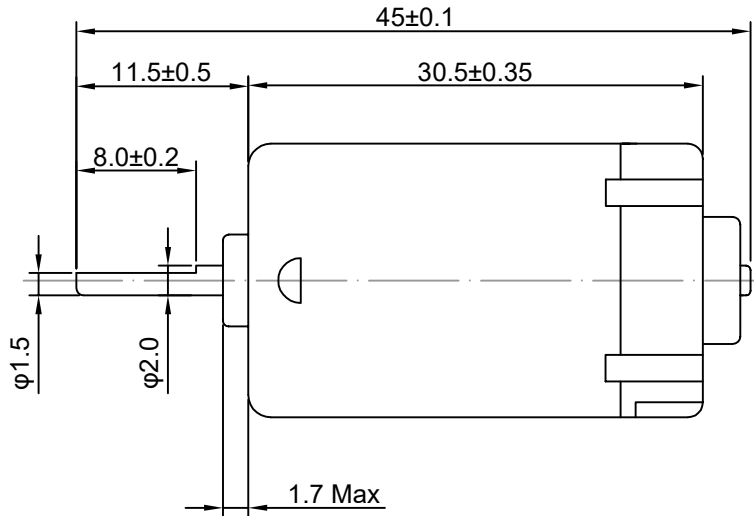
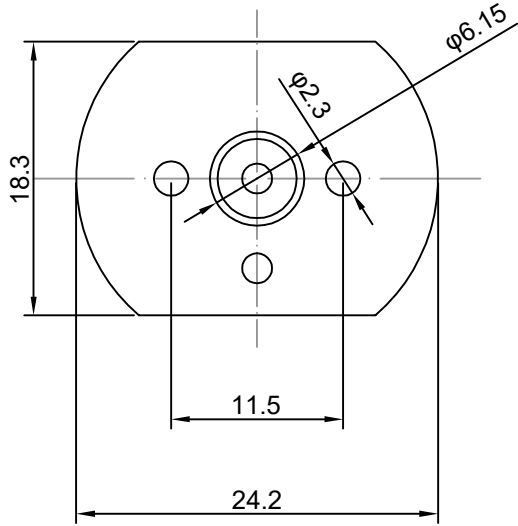


8 7 6 5 4 3 2 1

Direction Of Rotation



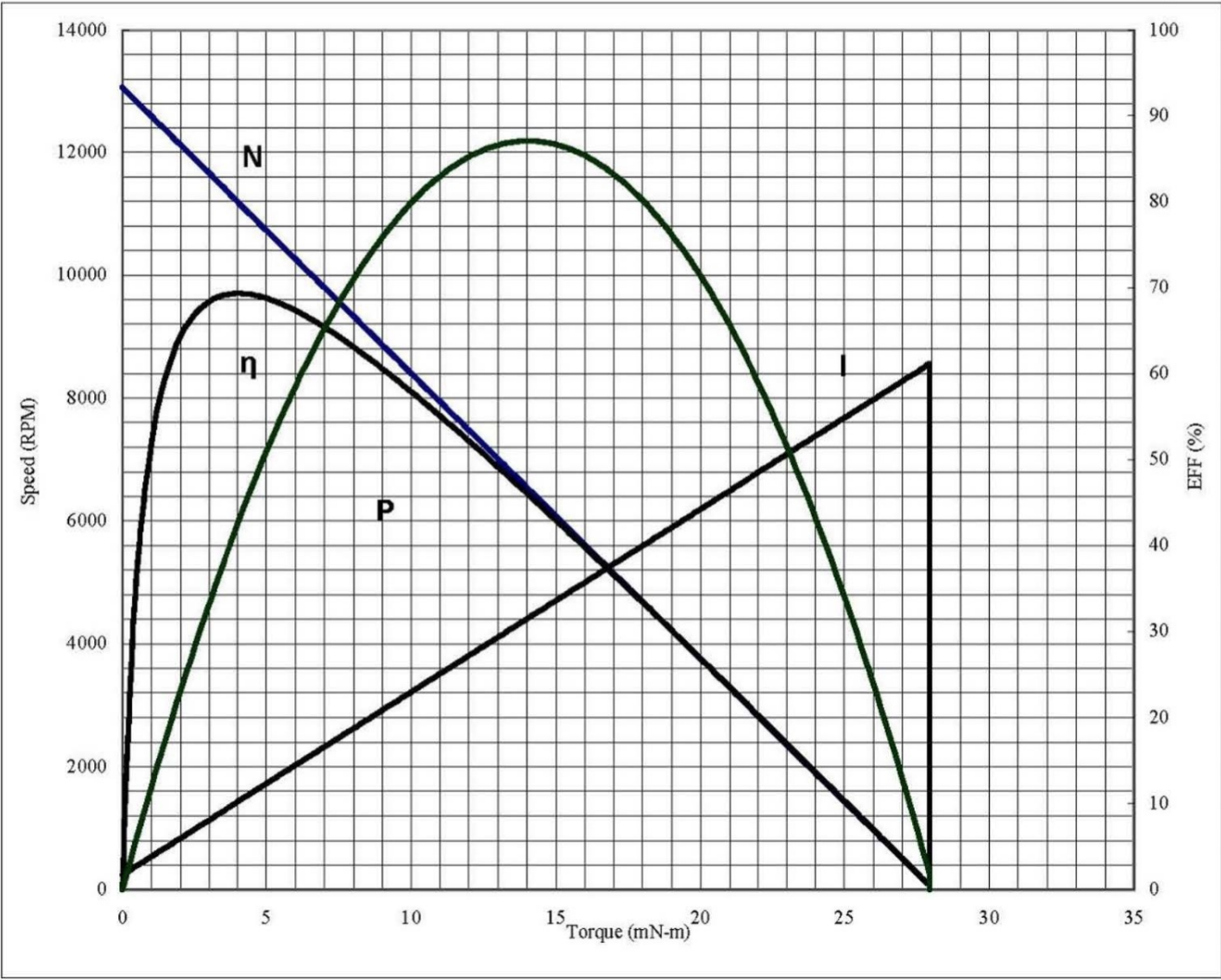
No.	Item	Specification	No.	Item	Specification
1	Rated Voltage	12V DC	7	Rated Load	48g.cm
2	Voltage Range	10.0-14.0V DC	8	Start Voltage	1.0V Max
3	No Load Current	0.12A Max	9	Stall Torque	28.08mN.m
4	No Load Speed	13100±10%RPM	10	Shaft end play	0.05-0.5mm
5	Rated Load Current	0.7A Max			
6	Rated Load Speed	11000±10%RPM			

Drawn	Tony	09/26/2024	Unit: mm		
Checked	Eva	09/26/2024	Kysan Electronics www.kysanelectronics.com		
Eng Appr.					
Mfg Appr.					
Q.A.					
SKU: 1112247			Siae: A4	Weight(Kg):	
			Scale		

8 7 6 5 4 3 2 1

SKU: 1112247

Full scale : ----- 100 % Eff
 ----- 10.0 Watts
 ----- 5.0 Amp.



Performance (in an ambient temperature of 25-30 ° C)

Motor tested rapidly to prevent significant temperature rise.

At a constant voltage of 12.0 Volts

Direction : CW

At No Load

Speed :	13056	RPM
Current :	0.086	AMPS

At stall (Extrapolated)

Torque :	28.08	mN-m
Current :	3.071	AMPS

At maximum efficiency

Efficiency:	69.3	%
Torque :	4.026	mN-m
Speed :	11184	RPM
Current :	0.514	AMPS
Output :	4.28	Watts

At maximum Power output

Output :	8.704	Watts
Torque :	14.041	mN-m
Speed :	6904	RPM
Current :	1.49	AMPS

Characteristics

Torque constant K_t :	9.408	mN-m/AMP
E.M.F. constant E_c :	9.408	mV/rad/sec
Dynamic resistance:	3.9076	Ohms
Motor regulation M_r :	464.92	RPM/mN-m