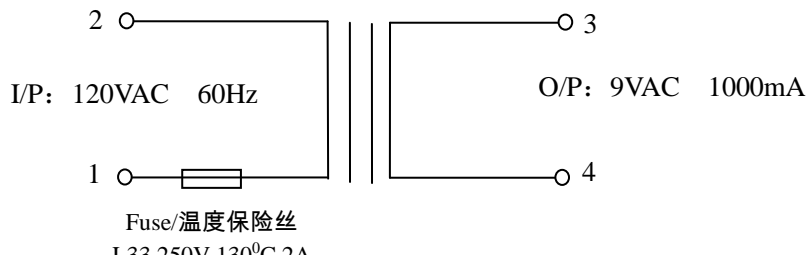


1.ELECTRICAL PERFORMANCE/电气特性：

1-1.Primary rated voltage and frequency: 120VAC 60Hz.

初级级额定电压及频率：120VAC 60Hz.

1-2.ELECTRICAL CHARACTERISTICS/电气原理图：



1-3. Secondary rated voltage and current/次级额定电压及电流

TEST POINT /测试点	FULL LOAD RATED VOLTAGE /负载额定电压	RATED CURRENT /额定电流	VOLTAGE REGULATION /电压调整率	NO LOAD VOLTAGE /空载电压
3~4	9VAC±5%	1000mA		11.3VAC±5%

1-4.Primary exciting current(I₀): 10mA rms max,at input 120VAC 60Hz.

初级空载电流(I₀)：有效值最大 10mA 输入 120VAC 60Hz.

Loading(I_L): 155mA rms max.

初级负载电流(I_L)：有效值 155mA 最大.

1-5.D.C.Resistance: Primary: Ω±15%,measured at25°C.

初级直流电阻：Ω±15%,环境温度 25°C.

1-6.Empty loss max: 0.21watts max,at input 115VAC 60Hz.

最大空损：0.21watts,输入 115VAC 60Hz.

1-7.效率 (Efficiency) When input voltage 115V/60Hz AC,the average efficiency of(25%50% 75%100%)

Current at load shall be 81.34%)Min.Meet CEClevel VI.

1-8.Temperature rise: 85°C max on primary coil by the resistance method,and 45°C max on the surface of the case by the thermometer method at 25°C ambient,rated load condition.

额定负载下电阻法线圈最大温升 85°C.热偶法外壳表面最大温升 45°C,环境温度 25°C.

1-9.Insulation resistance: 500VDC supplied,100M ohms minimum between winding & core.

绝缘电阻：线圈与铁芯间加 500VDC,绝缘电阻不小于 100MΩ.

1-10.HI-pot test: 1750VAC 50Hz for 60seconds (leakage current 1mA) primary to secondary&core.

耐压强度测试：初级-次级、初级-铁芯压 1750VAC 50Hz 60 秒 (漏电流 1 毫安) 无击穿、无拉弧.

1200VAC 50Hz for 60seconds (leakage current 1mA) secondary to core.

次级-铁芯 1200VAC 50Hz 60 秒 (漏电流 1 毫安) 无击穿、无拉弧.

1-11. Induce voltage: All secondary opened, primary should withstand 240V 360Hz for 60 second without breakdown.

倍频倍压测试：所有次级开路,初级需承受电压 240V 360Hz 60 秒而无击穿。

1-12. Life test: In an ambient temperature of 25°C ,90-95% R.H., applying a power source of 120VAC 60 Hz to primary, with full load 1000 mA for 24 hours continuously, unit output normally and meet the requirements of item 1-8、1-9.

老化测试：环境温度 25°C,相对湿度 90-95%,输入电压 120VAC 60 Hz 时,带额定负载 1000mA 连续工作 24 小时,产品输出正常且满足 1-8、1-9 项特性要求。

1-13. Humidity test: In an ambient temperature of 25±2°C and 90-95% R.H..for 48 hours after 10 minutes out of the oven, the unit should meet item 1-9 requirements, and insulation Resistance shall be 10M ohms minimum.

耐湿测试：在环境温度 25±2°C,相对湿度 90-95%条件下放置 48 小时,取出 10 分钟后,产品需满足第 1-9 项要求,且绝缘电阻不小于 10MΩ

2. MECHANICAL CHARACTERISTICS/机械特性:

2-1. Drop test: Dropped freely from 3 feet height onto a concrete floor covered with 1/8 inch vinyl tile 3 times from 3 different surface, the unit should meet the item 1-9

落地测试：从 3 英尺高自由落下到表面铺有 1/8 英寸厚聚乙烯垫的水泥地板上,三个不同面各一次,产品需符合 1-9 项特性要求。

2-2. Strain relief test: At normal position, 10 lbs to output cord for 60 seconds each, there shall be no breakage displacement.

S/R 吊重试验：在正常位置,输出线需吊重 10 英磅,持续 60 秒钟不可断裂.S/R 不可有移位现象。

2-3. Bending test: The plug and S/R should withstand weight of 200 gram, swinging from left to right at an angle of 120 degree for 1500 cycles, and 40 cycles per minute. The cord shall be conductible.

摇摆测试：输出线吊重 200 克,摆动角度 120 度,每分钟 40 来回,1500 个来回后仍需导通。

3. SAFETY STANDARD/安规标准:

◇ Meet/符合

◆ Approved/认可

◆ UL/CUL

◇ CSA

◇ TUV/CE

◇ BSI/CE

◇ T-MARK

CQC

◇ CCC

4. INSULATION SYSTEM/绝缘系统:

◇ CLASS A (105°C)

◇ CLASS E (120°C)

◆ CLASS B (130°C)

◇ CLASS F (155°C)

5. MECHANICAL REQUIRMENTS/外观要求：

5-1. Appearance: Damage and rusting are not permitted.

外观：无损伤无锈迹

6. ENVIROMENTAL CONDITION/外部条件：

6-1. Operating temperature range: -10°C --- $+40^{\circ}\text{C}$

正常工作温度： -10°C --- $+40^{\circ}\text{C}$

6-2. Storage temperature range: -20°C --- $+80^{\circ}\text{C}$

存贮温度： -20°C --- $+70^{\circ}\text{C}$

6-3. Operation humidity range: 30---85% R.H

正常工作湿度：30---85% R.H

7. INSPECTION ON LINE/线上检测：

7-1. The test items for each produce/全检项目

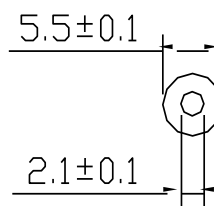
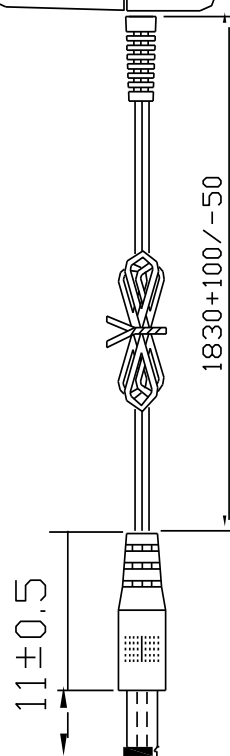
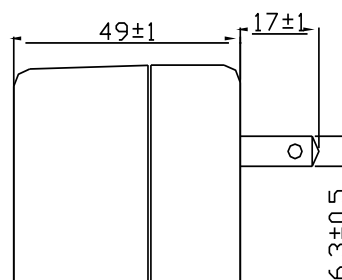
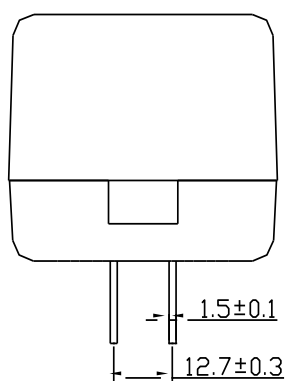
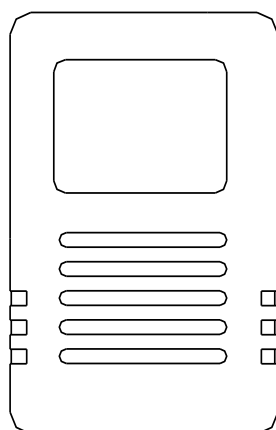
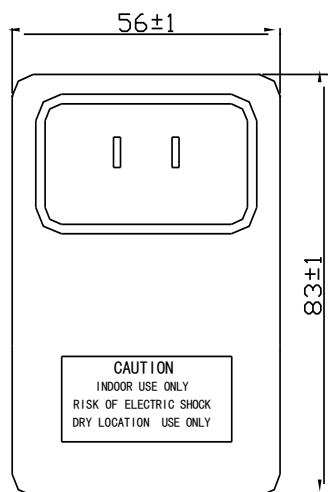
- ◆ Primary exciting current/初级激磁电流
- ◆ Core loss/铁芯损耗
- ◆ Output voltage/输出电压
- ◆ Input current and power at rated load/输入电流及功率
- ◆ Foreign mass by shock/敲击听异物
- ◆ Polarity of output plug/输出极性
- ◆ Hi-pot test/耐压测试
- ◆ Apperance/外观检查

7-2. The test item for part of products/抽测项目：

- ◆ Hum operating at rated load/额定负载时哼声
- ◆ D.C. Resistance/直流电阻
- ◆ Insulation test/绝缘测试

8. NET WEIGHT/单体净重/g

9. APPEARANCE DIMENSION/外观尺寸图 : (UNIT/单位 : mm)

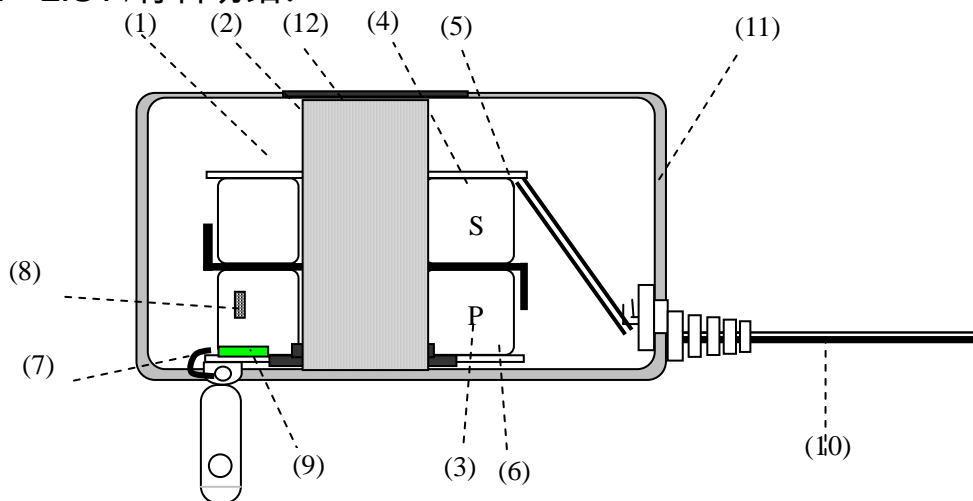


OUTPUT CORD/输出线 : 2468#22AWG 1.83M 直头

PLUG/DC 插头 : $5.5^{±0.1} \text{mm} \times 2.1^{±0.1} \text{mm} \times 11^{±0.5} \text{mm}$

CENTER/中心 :

10.MATERIAL LIST /材料明细:



ITEM M 序号	PARTS NAME 材料名称	MATERIAL&SPEC 材质	Q'TY 数量	MANUFATURER 供应商
1.	BOBBIN 线架	Nylon CLASS B 尼龙	THICK0.71mm MIN	E I DUPONT DE NEMOURS&CO INC(E41938M)
2.	CORE 铁芯	E-I LAMINATED SILICON STEEL/E-I 硅钢片		BEST LEGEND HUI DINGS LTD
3.	PRI.WINDING 初级线圈	2UEW MAGNET WIRE CLASS B 2UEW 漆包线		PACIFIC ELECTRIC WIRE & CABLE CO., LTD
4.	SEC.WINDING 次级线圈	2UEW MAGNET WIRE CLASS B 2UEW 漆包线		JUNG SHING WIRE CO., LTD E201757/E174837
5.	SEC.OUTER INSULATION 次级绝缘	MYLAR TAPE 0.025mm 玛拉胶带 0.025mm		JING JIANG PRESSURE SENSITIVE CO.,LID
6.	PRI.OUTER INSULATION 初级绝缘	MYLAR TAPE 0.025mm 玛拉胶带 0.025mm		E165111(N)
7.	LEAD WIRE/引线	UL1015# AWG22 红色		CHINA LONSID ELECTRONIC CO.,LTD E251728/E21382/E189474/E332522 E249743
8.	PROTECTION 保护器	THERMAL CUTOFF130°C 2A 250V 温度保险 L33		JOINT FORCE METAL RESEARCH & CO JING JIANG ZING CHENG ELECTROTICS CO.,LTD E142267/R2134811/E140847
9.	Primary Crossover Insulation/ 初级直立绝缘	ACETATE CLOTH TAPE CLASS B/皱纹胶		DUCK SUNG TAPE CO.,LTD(E105147)
10.	OUTPUT CORD/输出 线	2468#22AWG 黑色		XIN LONG ELECTRONIC CO.,LTD. E332522 E157717E164535/E189674/E341894/E49420 5
11.	ENCLOSURE/外壳	48# UL 插黑色		WEI DA INDUSTRIAL CO.,LTD
12.	NAMEPLATE 铭牌	PVC(UL/CSA)OR ALUMINUM PVC(UL/CSA 认可)或铝质		YOUMG TONE PRINTING MFG MH27610
13.				
14.				
NOTE	Vannish/凡立水	VARNISH V-1630FS		VIKING ELECTRONIC CO., LTD E60614

11.SAMPLE TEST DATA/样品测试报告:

ITEM/项目		SPEC/范围	SAMPLE/样品编号						
			#1	#2	#3	#4	#5	#6	
PRIMARY EXCITING CURRENT 初级空载电流(I ₀) I/P : 120VAC 60Hz		10mA MAX	5.89						
PRIMARY FULL LOAD CURRENT 初级负载电流(IL) I/P : 120VAC 60Hz		155mA MAX	103.1						
SECONDARY VOLTAGE 次级电压 NO LOAD/空载(V ₀)		11.3VAC±5%	11.28						
SECONDARY VOLTAGE 次级电压(VL) FULL LOAD/负载 : AC 1000mA		9VAC±5%	9.21						
NO LOAD CORE LOSS 空载损耗(P ₀) I/P : 115VAC 60Hz		0.21W MAX	0.198						
Hi-pot test 耐压	PRI.TO SEC-CORE 初级-次级-铁芯	AC 1750V/1mA/50Hz/60Seconds 交流 1750V/1mA/50Hz/60 秒	OK	OK					
	SEC.TO CORE 次级-铁芯	AC 1200V/1mA/50Hz/60Seconds 交流 1200V/1mA/50Hz/60 秒	OK	OK					

12.SAMPLE TEST DATA/样品测试报告:

CEC TEST DATA(SAMPLE1) 冷机测试 V

Input : 115 V / 60 Hz

Load(%)	Output Current		Output Voltage		O/P Power		I/P Consumption		Efficiency
0%	0	mA	10.83	V	0	W	0.198	W	
25%	250	mA	10.35	V	2.5875	W	2.87	W	90.15%
50%	500	mA	9.81	V	4.905	W	5.61	W	87.43%
75%	750	mA	9.23	V	6.9225	W	8.46	W	81.82%
100%	1000	mA	8.65	V	8.65	W	11.23	W	77.02%

Level V
Efficiency

81.34 %

Average
Efficiency

84.1% %

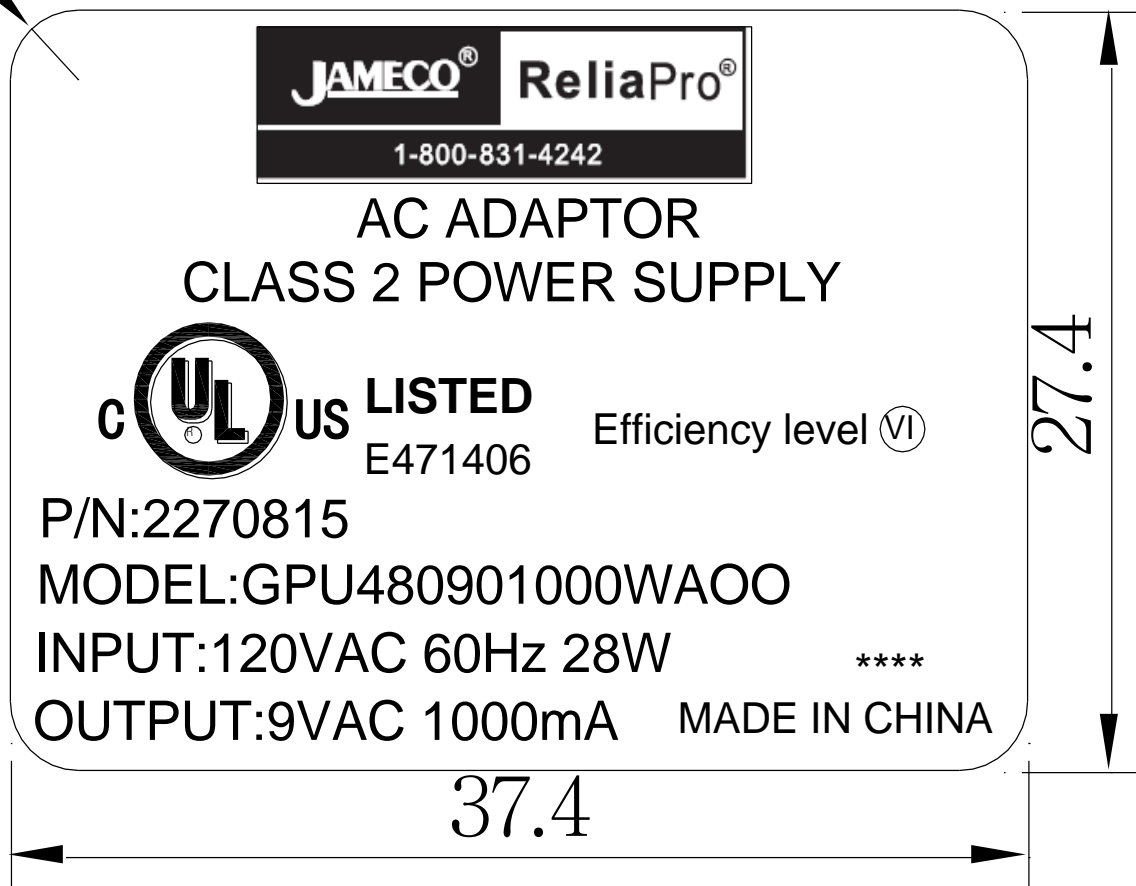
OK NG

13.NAMEPLATE DRAWING/铭牌图案：

Unit : mm

单位 : (mm)

R2.5



NOTE :

- 1、材质 PVC 0.17mm THICK MIN
- 2、银底黑字
- 3、自粘型
- 3、****前两个表示年份后两个表示月份