

规格承认书

SPECIFICATION FOR APPROVAL

CUSTOMER NAME:

客户名称: A096

DESCRIPTION:

品名: AC ADAPTOR

MODEL NO.:

规格型号: GPU410601000WDOO

DESIGNED NO.

工程编号: GQ100721

I/P: 120VAC 60Hz

O/P: 6VDC 1000mA

CUSTOMER PART NO.

贵公司料号: _____

REVISION.

版次: A

APPROVED BY(PLEASE SIGN)

客户承认签章



远洋科技有限公司
东莞市港奇电子有限公司

DONGGUANSHI GANGQI ELECTRONIC CO., LTD

地址:中国广东省东莞市横沥镇石涌民营工业区

TEL: 0769-83792901 83792879 38870198

FAX: 0769-83719110 83796880

E-mail: [GangQi @ GangQi .com.cn](mailto:GangQi@GangQi.com.cn)

ENGINEERING CHANGE REQUEST

ORIGINAL/修改前	REVISION/修改后

REV	DATE	DESCRIPTION	REVISION OF CAUSES/修改原因:

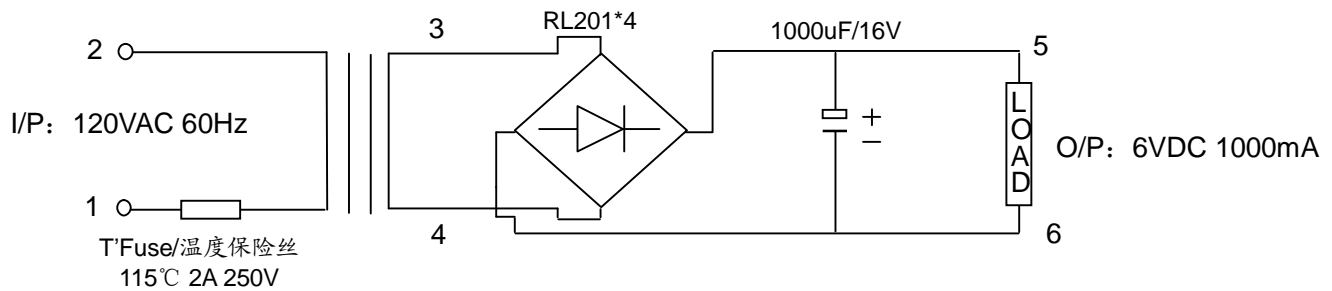
DRAWER/制定	CHECKED/审核	APPROVED/核准	CUSTOMER/客户	
刘杰飞 November 3,2010			MODEL NO/型号	GPU410601000WDOO
			REV/版本	A
			DATE/日期	November 3,2010
			PAGES/页码	1/10

1.ELECTRICAL PERFORMANCE/电气特性:

1-1.Primary rated voltage and frequency: 120VAC 60Hz.

初级额定电压及频率: 120VAC60Hz.

1-2.ELECTRICAL CHARACTERISTICS/电气原理图:



1-3.Secondary rated voltage and current/次级额定电压及电流:

TEST POINT /测试点	FULL LOAD RATED VOLTAGE /负载额定电压	RATED CURRENT /额定电流	VOLTAGE REGULATION /电压调整率	NO LOAD VOLTAGE /空载电压
5~6	6VDC±5%	1000mA		11.5VDC±5%

1-4.Primary exciting current(Io): 85mA rms max, at input 120VAC 60Hz.

初级空载电流(Io): 有效值最大 85mA 输入 120VAC 60Hz.

Loading(IL): 175mA rms max.

初级负载电流(IL): 有效值 175mA 最大.

1-5.D.C.Resistance: Primary: 93Ω±15%,measured at25°C.

初级直流电阻: 93Ω±15%,环境温度 25°C.

1-6.Empty loss max: 2.1watts max, at input 120VAC 60Hz.

最大空损: 2.1watts,输入 120VAC 60Hz.

1-7.Temperature rise: 85°C max on primary coil by the resistance method, and 45°C max on the surface of the case by the thermometer method at 25°C ambient, rated load condition.

额定负载下电阻法线圈最大温升 85°C.热偶法外壳表面最大温升 45°C,环境温度 25°C.

1-8.Insulation resistance: 500VDC supplied,100M ohms minimum between winding & core.

绝缘电阻: 线圈与铁芯间加 500VDC,绝缘电阻不小于 100MΩ.

1-9.HI-pot test: 1250VAC 50Hz for 60seconds (leakage current 1mA) primary to secondary & core.

Potential 20% higher may be applied for one second

耐压强度测试: 初级-次级、初级-铁芯压 1250VAC 50Hz 60 秒 (漏电流 1 毫安) 无击穿、无拉弧. 或者提高 20%电压 1 秒.

1250VAC 50Hz for 60seconds (leakage current 1mA) secondary to core. Potential 20% higher may be applied for one second

次级-铁芯 1250VAC 50Hz 60 秒 (漏电流 1 毫安) 无击穿、无拉弧. 或者提高 20%电压 1 秒.

DRAWER/制定	CHECKED/审核	APPROVED/核准	CUSTOMER/客户	
<p>刘杰飞</p> <p>November 3,2010</p>			MODEL NO/型号	GPU410601000WDOO
			REV/版本	A
			DATE/日期	November 3,2010
			PAGES/页码	2/10

1-10. Induce voltage: All secondary opened, primary should withstand 240V 360 Hz for 60second without breakdown.

倍频倍压测试: 所有次级开路,初级需承受电压 240V 360Hz 60 秒而无击穿.

1-11. Life test: In an ambient temperature of 25°C ,90-95% R.H., applying a power source of 120VAC 60Hz to primary, with full load 1000mA for 24hours continuously, unit output normally and meet the requirements of item 1-8、1-9.

老化测试: 环境温度 25°C,相对湿度 90-95%,输入电压 120VAC 60Hz 时,带额定负载 1000mA 连续工作 24小时,产品输出正常且满足 1-8、1-9 项特性要求.

1-12. Humidity test: In an ambient temperature of 25±2°C and 90-95% R.H.. for 48 hours after 10 minutes out of the oven, the unit should meet item 1-9 requirements, and insulation Resistance shall be 10M ohms minimum.

耐湿测试: 在环境温度 25±2°C,相对湿度 90-95%条件下放置 48 小时,取出 10 分钟后,产品需满足第 1-9 项要求,且绝缘电阻不小于 10MΩ

2. MECHANICAL CHARACTERISTICS/机械特性:

2-1. Drop test: Dropped freely from 3 feet height onto a concrete floor covered with 1/8 inch vinyl tile 3 times from 3 different surface, the unit should meet the item 1-9

落地测试: 从 3 英尺高自由落下到表面铺有 1/8 英寸厚聚乙稀垫的水泥地板上,三个不同面各一次,产品需符合 1-9 项特性要求.

2-2. Strain relief test: At normal position, 20 lbs to output cord for 60 seconds each, there shall be no breakage displacement.

S/R 吊重试验: 在正常位置,输出线需吊重 20 英磅,持续 60 秒钟不可断裂.S/R 不可有移位现象.

2-3. Bending test: The plug and S/R should withstand weight of 200 gram, swinging from left to right at an angle of 120 degree for 1000 cycles, and 15-20cycles per minute. The cord shall be conductible.

摇摆测试: 输出线吊重 200 克,摆动角度 120 度,每分钟 15-20 来回,1000 个来回后仍需导通.

3. SAFETY STANDARD/安规标准:

◆Meet/符合

◇Approved/认可

◆UL/CUL

◇CSA

◇TUV/CE

◇BSI/CE

◇T-MARK

◇CQC

◇CCC

4. INSULATION SYSTEM/绝缘系统:

◇CLASS A (105°C)

◇CLASS E (120°C)

◆CLASS B (130°C)

◇CLASS F (155°C)

DRAWER/制定	CHECKED/审核	APPROVED/核准	CUSTOMER/客户	
<p>刘杰飞</p> <p>November 3,2010</p>			MODEL NO/型号	GPU410601000WDOO
			REV/版本	A
			DATE/日期	November 3,2010
			PAGES/页码	3/10

5. MECHANICAL REQUIRMENTS/外观要求:

5-1. Appearance: Damage and rusting are not permitted.

外观: 无损伤无锈迹

6. ENVIROMENTAL CONDITION/外部条件:

6-1. Operating temperature range: -10°C---+40°C

正常工作温度: -10°C---+40°C

6-2. Storage temperature range: -20°C---+80°C

存贮温度: -20°C---+80°C

6-3. Operation humidity range: 30---85% R.H

正常工作湿度: 30---85% R.H

7. INSPECTION ON LINE/线上检测:

7-1. The test items for each produce/全检项目

- ◆ Primary exciting current/初级激磁电流
- ◆ Core loss/铁芯损耗
- ◆ Output voltage/输出电压
- ◆ Input current and power at rated load/输入电流及功率
- ◆ Foreign mass by shock/敲击听异物
- ◆ Polarity of output plug/输出极性
- ◆ Hi-pot test/耐压测试
- ◆ Appearance/外观检查

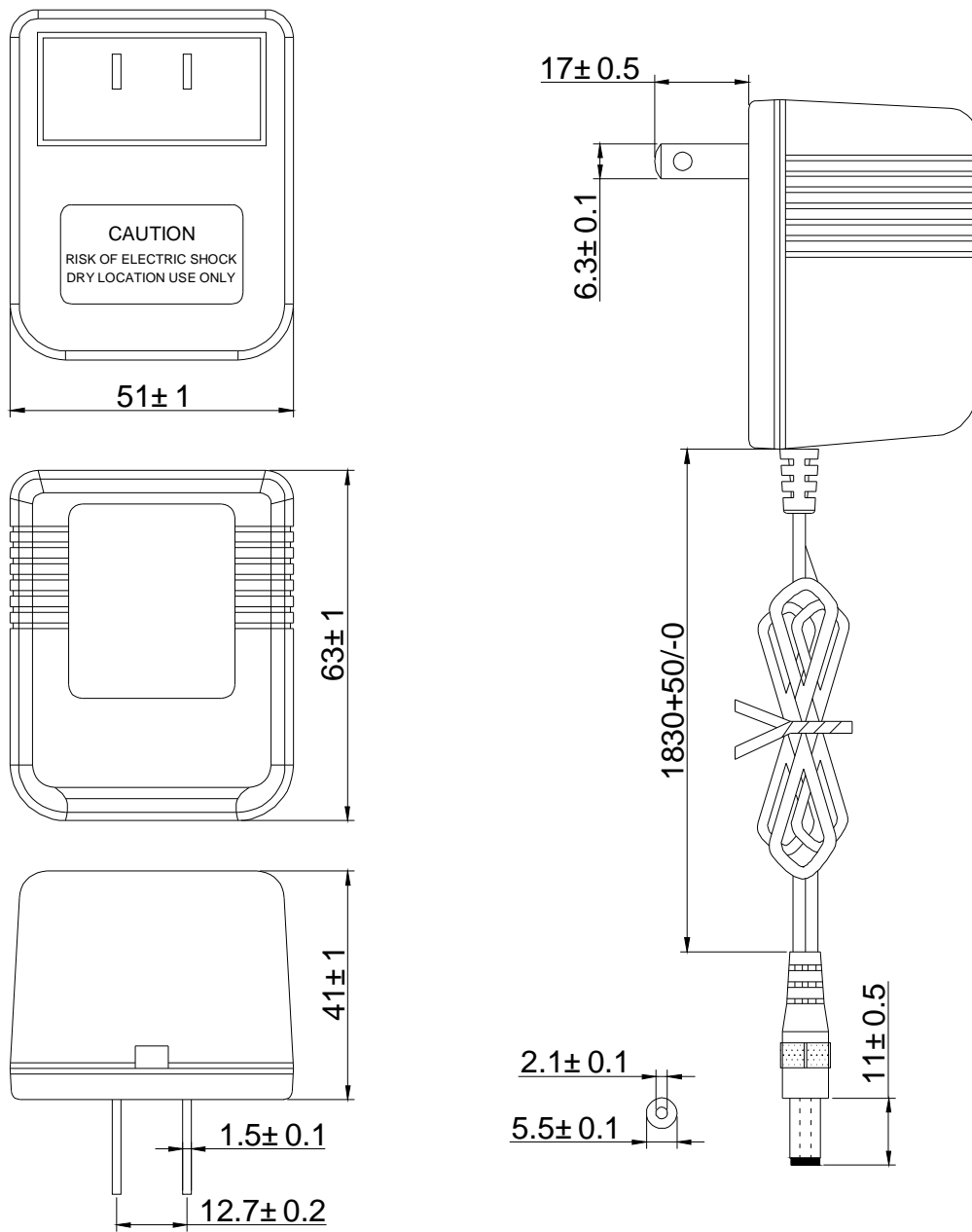
7-2. The test item for part of products/抽测项目:

- ◆ Hum operating at rated load/额定负载时哼声
- ◆ D.C. Resistance/直流电阻
- ◆ Insulation test/绝缘测试

8. NET WEIGHT/单体净重 302.6g

DRAWER/制定	CHECKED/审核	APPROVED/核准	CUSTOMER/客户	
<p style="text-align: center;">刘杰飞</p> <p>November 3,2010</p>			MODEL NO/型号	GPU410601000WDOO
			REV/版本	A
			DATE/日期	November 3,2010
			PAGES/页码	4/10

9.APPEARANCE DIMENSION/外观尺寸图: (UNIT/单位: mm)



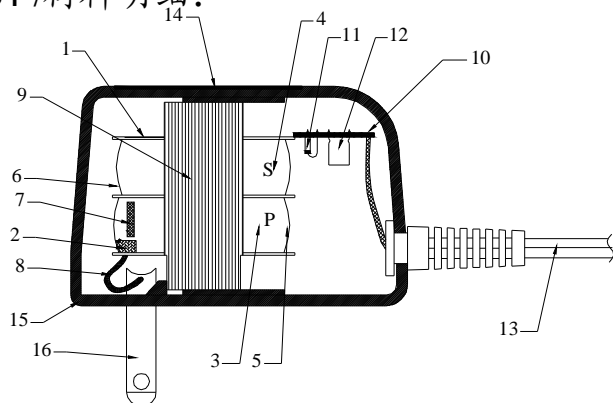
OUTPUT CORD/输出线: UL2468#22AWG 线长 1.83m

PLUG/DC 插头: $5.5 \pm 0.1 \text{mm} \times 2.1 \pm 0.1 \text{mm} \times 11 \pm 0.5 \text{mm}$ 直头

CENTER/中心: “+”极

DRAWER/制定	CHECKED/审核	APPROVED/核准	CUSTOMER/客户	
刘杰飞 November 3,2010			MODEL NO/型号	GPU410601000WDOO
			REV/版本	A
			DATE/日期	November 3,2010
			PAGES/页码	5/10

10.MATERIAL LIST /材料明细:



ITEM 序号	PARTS NAME 材料名称	MATERIAL&SPEC 材质	MANUFATURER 供应商
1.	BOBBIN/线架	PA66 THICK0.71mm MIN	E I DUPONT DE NEMOURS&CO INC.E41938
2.	Primary Crossover Insulation/初级直立绝缘	ACETATE CLOTH TAPE CLASS B/醋酸布	SUZHOU JINGYI SPECIAL ADHESIVE TAPE CO LTD E188295
3.	PRI.WINDING 初级线圈	2UEW MAGNET WIRE CLASS B 2UEW 漆包线	PACIFIC ELECTRIC WIRE & CABLE CO., LTD E201757 JUNG SHING WIRE CO., LTD.E174837
4.	SEC.WINDING 次级线圈	2UEW MAGNET WIRE CLASS B 2UEW 漆包线	
5.	PRI.OUTER INSULATION 初级绝缘	MYLAR TAPE 0.025mm 玛拉胶带 0.025mm CLASS B	JINGJIANG YAHUA PRESSURE SENSITIVE GLUE CO LTD E165111 JING JIANG JINGYI ADHESIVE PRODUCT CO.,LTD.E246950 SUZHOU MAILADUONA ELECTRIC MATERIAL CO.,LTD.E188295
6.	SEC.OUTER INSULATION 次级绝缘	MYLAR TAPE 0.025mm 玛拉胶带 0.025mm CLASS B	
7.	PROTECTION 保护器	THERMAL CUTOFF 温度保险 115℃ 250V M20	JOINT FORCE METAL RESEARCH & CO.E142267 HAG LAIN TRADING CO.,LTD.E232772 AUPO ELECTRONICS LTD.E140847
8.	LEAD WIRE/引线	UL1015# AWG22	SHENZHENDONGJUWIRE&CABLE CO.,LTD.E189674
9.	CORE 铁芯	E-I LAMINATED SILICON STEEL E-I 硅钢片	BEST LEGEND HUI DINGS LTD.
10.	RECTIFIER BOARD 电路板	P.C.BOARD(94-V0) CLASS B 阻燃等级 94-V0 1.60mm THICK	KINGBOARD LAMINATES(MACAO COMMERCIAL OFFSHORE) LTD.E123995
11.	DIODE 二极管	SILICON RECTIFIERS 硅二极管 RL201	DONGGUAN DE HUI ELECTRONIC CO.,LTD. DICK (SHENZHEN) ELECTRONICS CO., LTD.
12.	CAPACITOR 电容	ELECTROLYTI/电解电容 1000uF 16V	DONGGUAN DE HUI ELECTRONIC CO.,LTD. SHENZHEN SAMSON ELECTRONICS TECHNOLOGY CO.,LTD JWCO ELEETRONICS CO.,LTD
13.	OUTPUT CORD/输出线	2468#22AWG	XIN LONG ENTERPRISE CO.E207567/E148059 DESAY WIRE CO.,LTD.E252840/E214500 GUANG QIAN WIRE CO.,LTD.E176095
14.	NAMEPLATE 铭牌	PET(UL/CSA)OR ALUMINUM PET(UL/CSA 认可)或铝质	JING XING PRINTING FACTORY MH45133 SANLI PRINTING FACTORY.MH20917 GUANG NING YOU TONG.MH27610
15.	ENCLOSURE/外壳	41UL 插	SABIC INNOVATIVE PLASTICS JAPAN LLC.E45587 DONGYUAN ELECTRONIC CO LTD SHENZHEN E302514
16.	BLADE	NICKEL PLATING COPPER2PIN	EVERPROUD.LTD
NOTE	Varnish 凡立水	V821A	QUALIPOLY CHEMICAL CORP.E213437

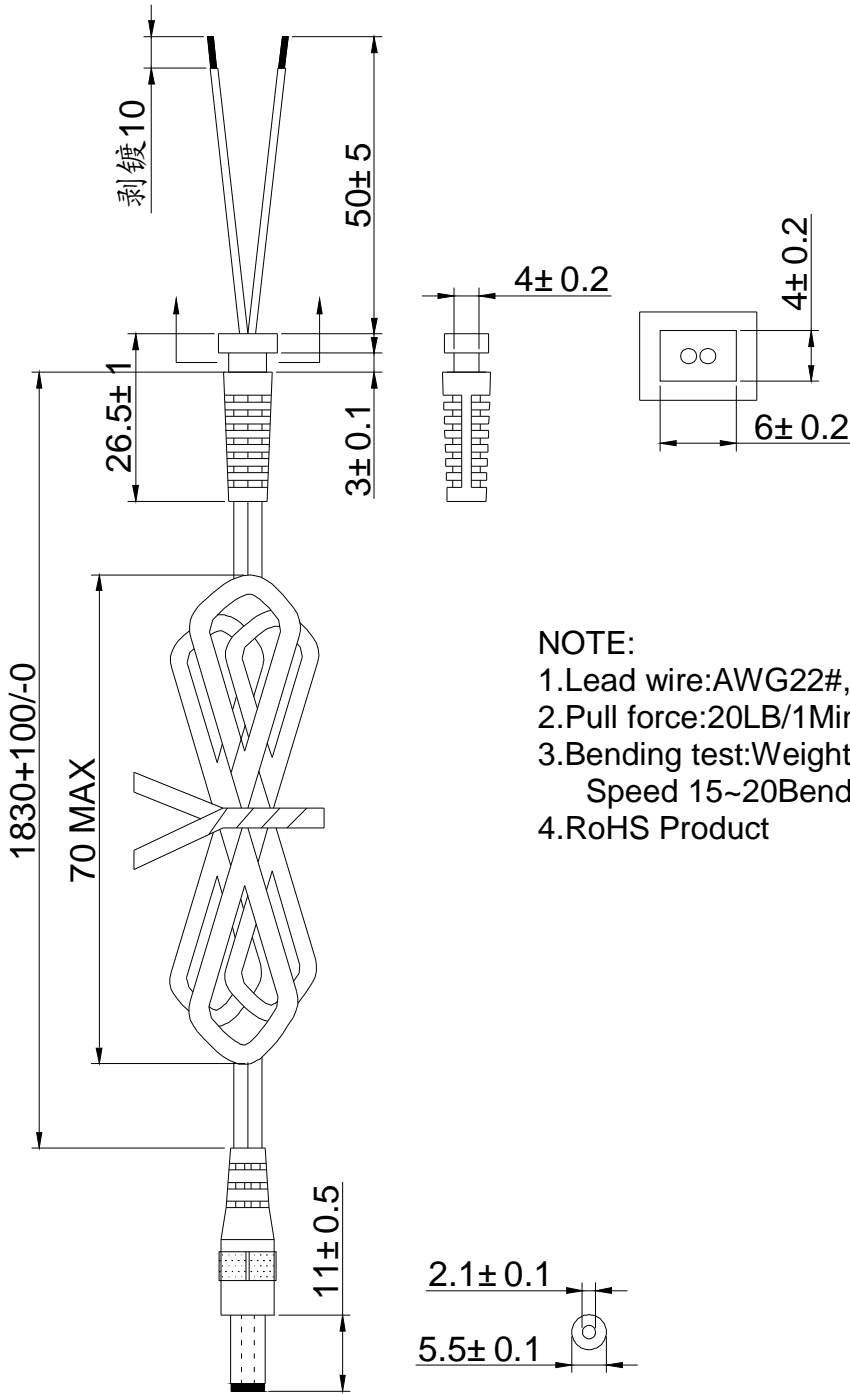
DRAWER/制定	CHECKED/审核	APPROVED/核准	CUSTOMER/客户
<p>刘杰飞</p> <p>November 3,2010</p>			MODEL NO/型号 GPU410601000WDOO
			REV/版本 A
			DATE/日期 November 3,2010
			PAGES/页码 6/10

11.SAMPLE TEST DATA/样品测试报告:

ITEM/项目	SPEC/范围	SAMPLE/样品编号				
		#1	#2	#3	#4	#5
PRIMARY EXCITING CURRENT 初级空载电流(I0) I/P: 120VAC 60Hz	85mA MAX	45	47	45		
PRIMARY FULL LOAD CURRENT 初级负载电流(IL) I/P: 120VAC 60Hz	175mA MAX	121	121	120		
SECONDARY VOLTAGE 次级电压 NO LOAD/空载(VO)	11.5VDC±5%	11.49	11.49	11.48		
SECONDARY VOLTAGE 次级电压(VL) FULL LOAD/负载: DC 1000mA	6VDC±5%	6.1	6.1	6.08		
Hi-pot test 耐压	PRI.TO SEC-CORE 初级-次级-铁芯	AC 1250V/1mA/50Hz/60Seconds 交流 1250V/1mA/50Hz/60 秒	OK	OK	OK	
	SEC.TO CORE 次级-铁芯	AC 1250V/1mA/50Hz/60Seconds 交流 1250V/1mA/50Hz/60 秒	OK	OK	OK	
DRAWER/制定	CHECKED/审核	APPROVED/核准	CUSTOMER/客户			
刘杰飞 November 3,2010			MODEL NO/型号	GPU410601000WDOO		
			REV/版本	A		
			DATE/日期	November 3,2010		
			PAGES/页码	7/10		

12.DC CORD DRAWING/DC 线图案:

Unit: mm
单位: (mm)



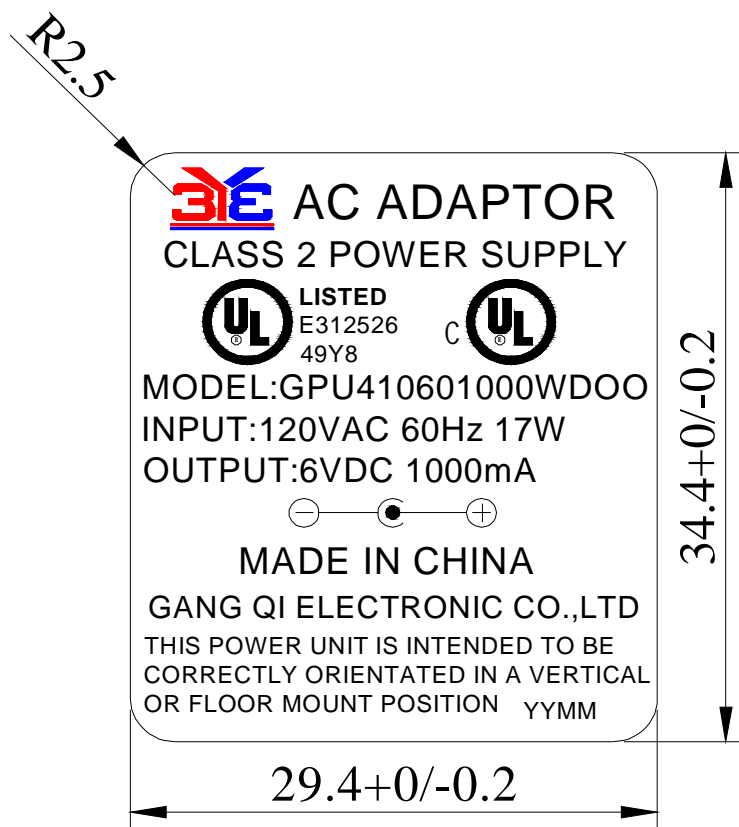
NOTE:

1. Lead wire: AWG22#, Φ0.16/17C
2. Pull force: 20LB/1 Minute of S/R
3. Bending test: Weight 200g, Angle 120°
Speed 15~20 Bends/min ≥ 1000 Time
4. RoHS Product

DRAWER/制定	CHECKED/审核	APPROVED/核准	CUSTOMER/客户	
刘杰飞 November 3, 2010			MODEL NO/型号	GPU410601000WDOO
			REV/版本	A
			DATE/日期	November 3, 2010
			PAGES/页码	8/10

13.NAMEPLATE DRAWING/铭牌图案:

Unit: mm
单位: (mm)

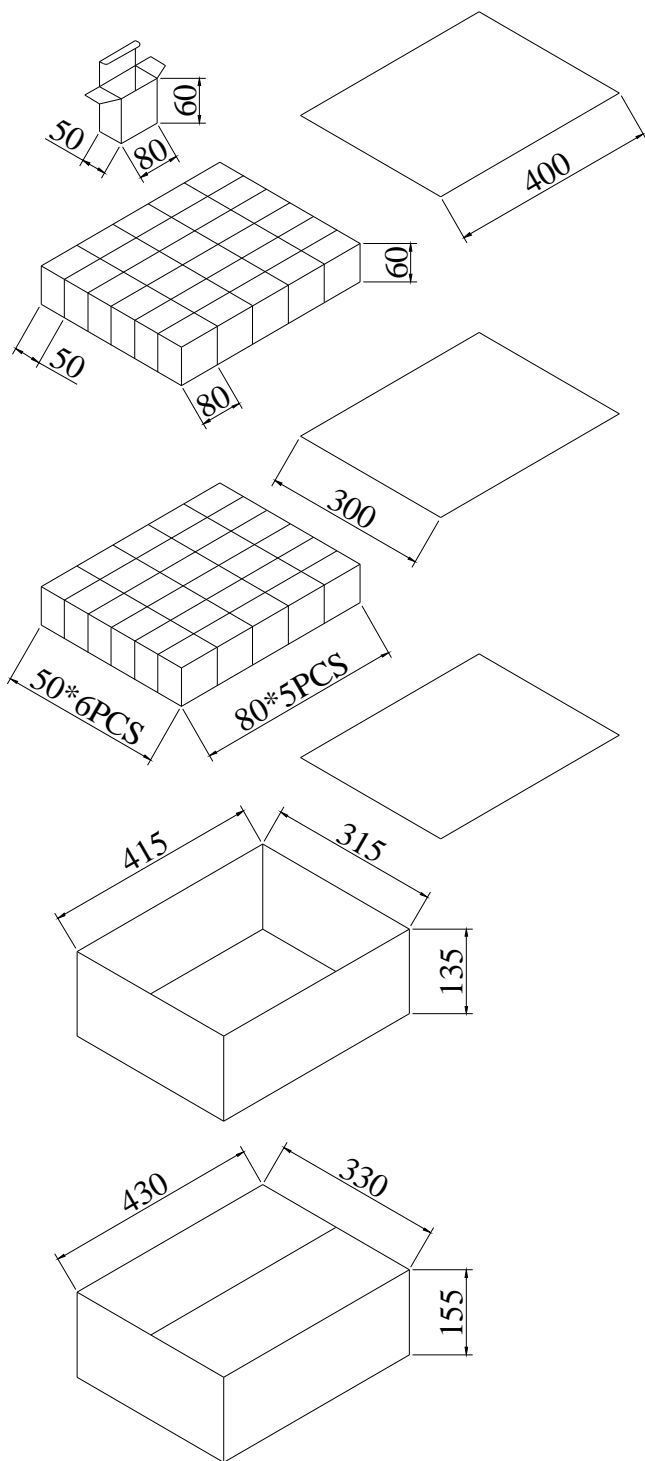


NOTE:

- 1、PET 0.27mm THICK MIN
- 2、银底黑字
- 3、自粘型
- 4、“YYMM”表示生产周期,“YY”表示年份,“MM”表示月份

DRAWER/制定	CHECKED/审核	APPROVED/核准	CUSTOMER/客户	
刘杰飞 November 3,2010			MODEL NO/型号	GPU410601000WDOO
			REV/版本	A
			DATE/日期	November 3,2010
			PAGES/页码	9/10

14.PACKING/包装



装白盒

- 1、外径尺寸为 80*50*60mm;
- 2、材质: 450g 纸;
- 3、每个产品装 1PCS 白盒,。

装纸箱

- 1、纸箱外径尺寸为 430*330*155mm;
- 2、材质: A=A 纸;
- 3、平卡 B=C 材质, 尺寸 400*300mm; 3PCS/箱.
- 4、围卡: 415*315*135mm,1PCS/箱
- 4、每箱装白盒 60PCS。

侧唛:

P/N: GPU410601000WDOO
 Q'TY: 60 PCS
 N.W: 18.1 KG
 G.W: 19.1 KG

正唛:

C/NO:
 MADE IN CHINA

DRAWER/制定	CHECKED/审核	APPROVED/核准	CUSTOMER/客户	
<p>刘杰飞</p> <p>November 3,2010</p>			MODEL NO/型号	GPU410601000WDOO
			REV/版本	A
			DATE/日期	November 3,2010
			PAGES/页码	10/10